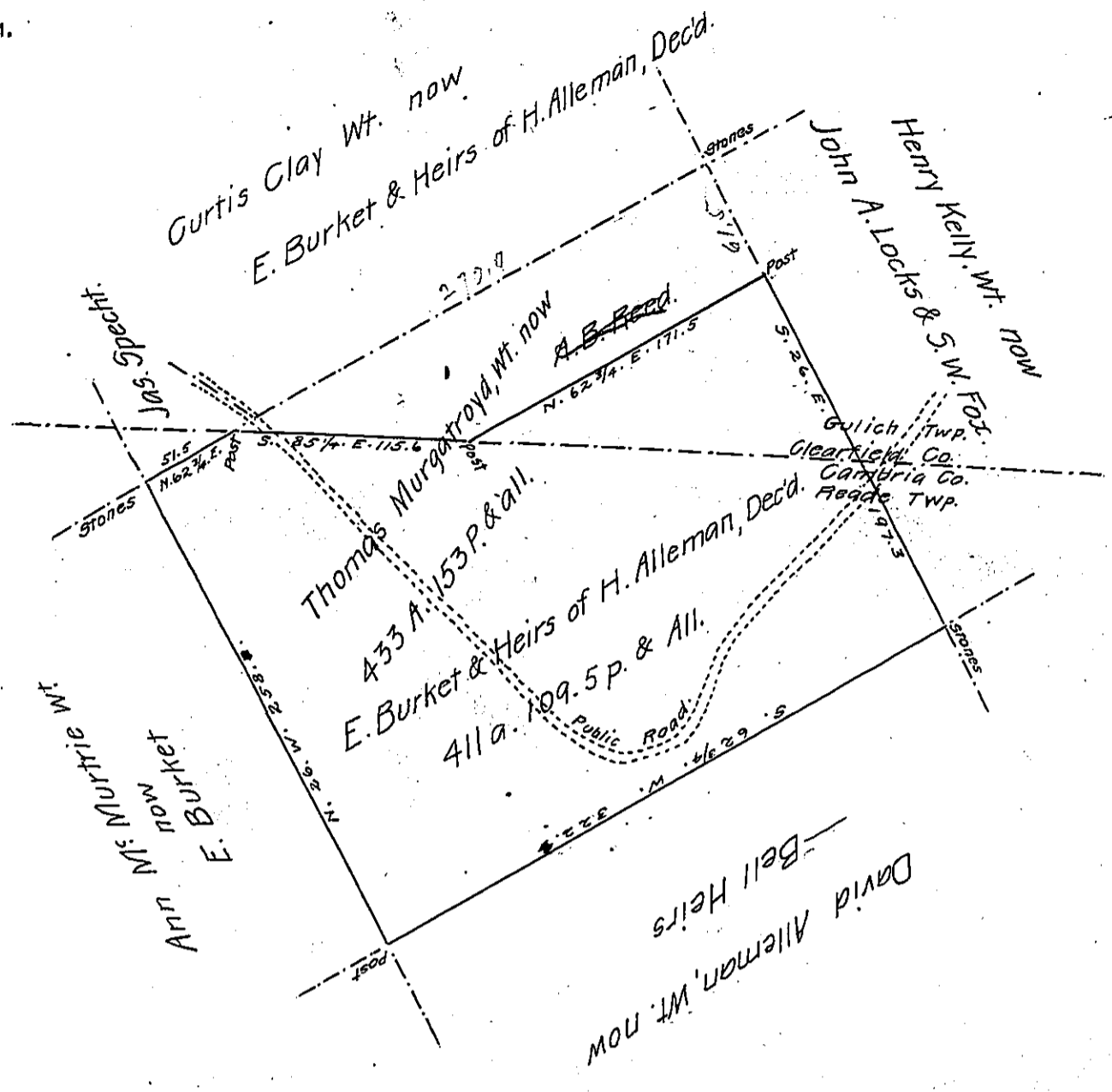


FORM No. 1.



A Draft of a tract of land, situated, partly in the Township of Reade and County of Cambria, and partly in the Township of Gulich, and County of Clearfield, containing 411 acres, 109.5 perches and allowance of six per cent. for roads, etc. Surveyed for E. Burket & Heirs of Henry Alleman, Dec'd. the 23rd. day of April 1897, it being a part of a larger tract of 433 acres, 153 perches, and allowance, originally surveyed in pursuance of a warrant granted to Thomas Murgatroyd, dated the 17th. day of April 1793.

S. G. Fetterman

To James W. Latta, Esq., County Surveyor

Secretary of Internal Affairs

Approved by me, the 17th. day of May, 1897, as being correct.

T. W. Moore

County Surveyor of Clearfield County

IN TESTIMONY that the above is a copy of the original remaining on file in the Department of Internal Affairs of Pennsylvania, made conformably to an Act of Assembly approved the 16th day of February, 1833, I have hereunto set my Hand and caused the Seal of said Department to be affixed at Harrisburg, this thirtieth day of March 1906

Lucas B. Parsons
 Secretary of Internal Affairs.